



ESCO®

# Ultralok® Tooth System

for construction  
and aggregate  
applications

**WEHR**

Mining technology for a sustainable future



# Ultralok® tooth system – engineered to outlast

ESCO is the leader in high-performance tooth systems for the earthmoving industry. The cost-efficient, low profile Ultralok tooth system performs in a full range of machine applications. The integrated lock makes it a true two-piece system, reducing inventory over traditional three-piece systems.

## Ultralok – simple, easy and safer

- Integrated lock means no pins to order, lose or mismatch
- Points are easily installed and removed with a simple pry tool
- Minimal downtime between replacements
- Hammerless and safer
- Fast field replacements -- just click and dig



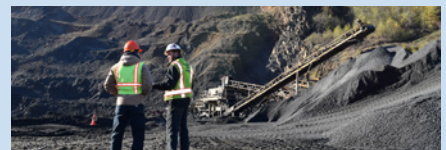
**Visit the Ultralok website**

<https://esco-ultralok.weir/>

## Excellent customer value

### Using the Ultralok system results in increased productivity with less maintenance

- A better operating cost position and increased profits
- Greater success in obtaining job bids while maintaining profitability
- Reliability provides more machine uptime to complete jobs on time



A pry tool is used to lock and unlock the point to the adapter.

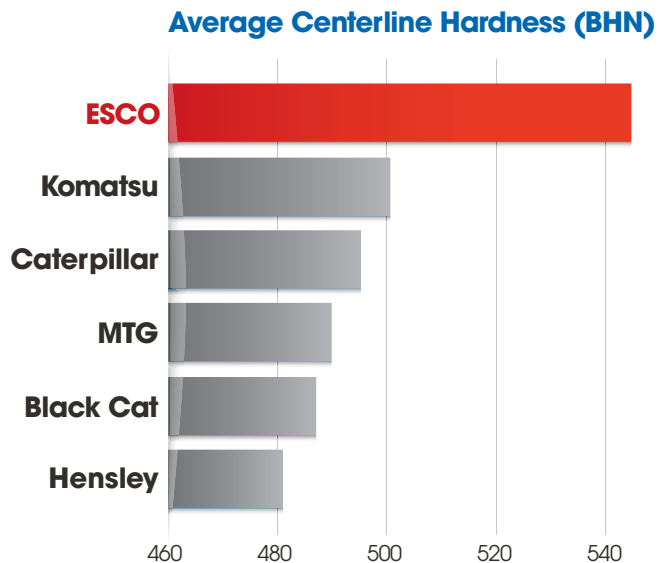
# ESCO® is the top choice for premium quality cast steels

## An independent metallurgical testing lab has confirmed the superior hardness of ESCO alloys

The Intertek Laboratory Testing Services with over 130 years experience conducted independent testing on ESCO Ultralok teeth and teeth from Caterpillar® Advansys™, Hensley®, Komatsu®, MTG® and Black Cat®.

### Key findings from independent hardness testing:

- ESCO Ultralok teeth had the most consistent hardness across the centerline with no variation over the total length of the tooth
- Only ESCO Ultralok teeth measured over 530 BHN across the entire centerline of every tooth
- ESCO Ultralok teeth ranked highest in average centerline hardness
- Other systems logged hardness as low as 461 BHN



## The Ultralok® tooth wear metal advantage

### Longer wear life than competitive systems

In addition to alloy quality, enhanced tooth profiles contribute to performance. Profiles may be similar but the real value is useable wear metal. ESCO provides more wear metal, cast in superior alloys to out-wear the competition. Ultralok teeth are up to 9.5% harder with up to 25% more wear metal which can provide up to 55% longer wear life than competitive teeth.

**Up to 55%  
Longer Wear Life**



Ultralok® U55H  
33.2 lbs. blade weight  
(64.0% of total weight)



Advansys™ 368-3791 A130  
26.5 lbs. blade weight  
(47.3% of total weight)





**“The impact on  
our productivity  
has been...the  
teeth are lasting  
longer and very  
good we have  
less throwaway.”**

– Jason Pendergast  
Plant Manager, Lafarge



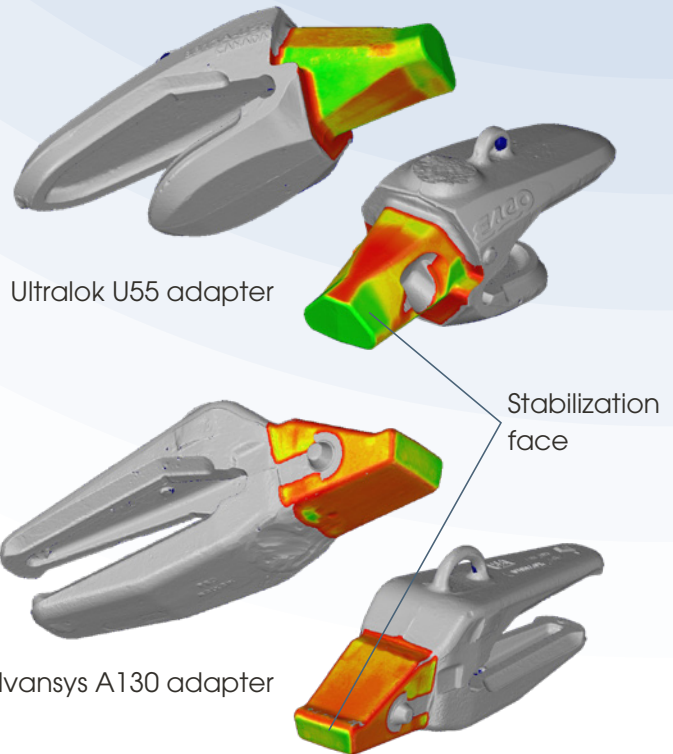
# Ultralok® tooth system – engineered to be reliable

## Ultralok system provides reliability from increased stabilization and secure locking

The Ultralok adapter nose is engineered with multiple stabilization surfaces that withstand forces and impacts in every direction. The superior fit delivers better resistance to impact and premature breakage, reducing possible tooth loss.

The Caterpillar® Advansys® point-to-adapter fit gaps are over 3 times larger than that of the Ultralok system. This looser fit can lead to accelerated nose wear.

In the images on the right, green represents a tight fit, while red indicates a looser fit.



## Superior profile improves penetration

### Field-proven digging performance outperforms the competition

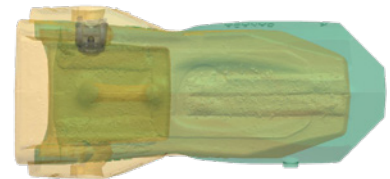
The Ultralok system is engineered with lower nose height, smooth point to adapter transition and streamlined point shapes. With up to 28% smaller rear profile than the competition, the Ultralok points provide excellent penetration, lowering fuel consumption with less machine wear and tear.

In the images shown, green represents the slimmer profile and better penetration of the Ultralok system compared to other systems.

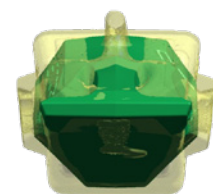


Side view

Deere® TK-Series adapter and point



Top view



Front view

Caterpillar® Advansys™ point

# Ultralok® tooth system applications

The Ultralok system includes a comprehensive package of points and adapters for 6 metric ton to 75 metric ton excavators and 1.8 cubic yard to 12 cubic yard class wheel loaders. The system is also available for extreme hot slag applications from 5.4 to 9.2 m<sup>3</sup> (7 to 12 yd<sup>3</sup>) class wheel loaders with ultra-secure bolt-in or weld-in locks.

Point profiles are optimized to remain sharp throughout their life while delivering maximum system strength.

## Tooth profiles to match any application



A - Abrasion



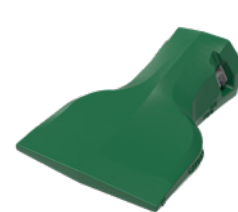
AP - Abrasion/  
Penetration



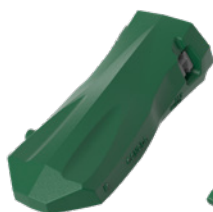
APV - Abrasion/  
Penetration V



C - Chisel



F - Flare



H - Heavy



K - Clamshell



P - Pick



R - Rock



S - Standard



T - Twin Pick

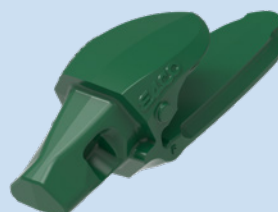
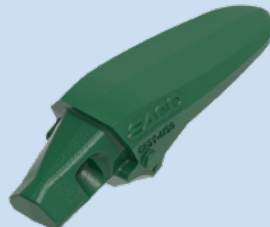
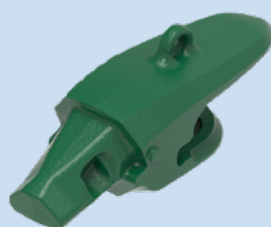
## Wide range of Ultralok adapters

### Weld-on

ESCO® offers Ultralok weld-on adapters to fit all popular construction class excavators, wheel loaders and face shovels. There is an adapter style to provide optimum machine performance in any application.

### Bolt-on

Ultralok bolt-on adapters are also available for most models of wheel loaders. ESCO's bolt-on designs are enhanced for greater strength and performance over OEM versions.

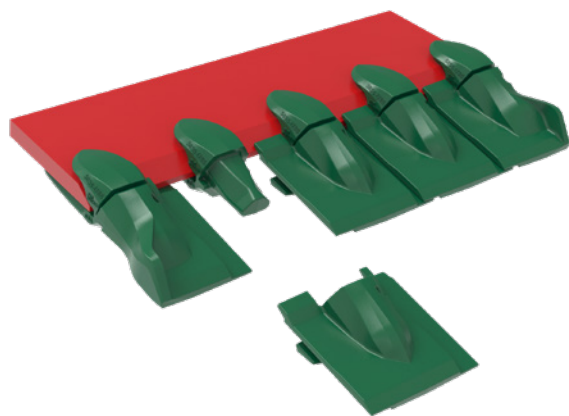


## Ultralok® continuous edge tooth system

Contractors are in a unique position with the wide range of applications and digging conditions they encounter. The Ultralok continuous edge system allows customers to quickly adapt buckets to match upcoming job requirements for improved efficiency and lower operating costs.

### The solution to welding on plate

- Unique design allows individual worn parts to be easily replaced
- Increases bucket capacity, productivity and versatility
- No welding required improves worker safety
- Corner point wings channel material into the bucket and reduce bucket corner wear



## Ultralok will-fit excavator lip assemblies

ESCO® will-fit excavator lip assemblies feature the superior Ultralok tooth system. The lips provide an easy option to upgrade existing buckets to ESCO's Ultralok tooth system when replacing worn lips. The assemblies are designed to simplify lip replacement.

### High quality, easy upgrade for your bucket

- Easily trimmed to fit all popular bucket widths
- Spot-welded corner adapters are easily repositioned
- Tough A514 steel plate lip is standard
- Available for 12T to 40T class machines



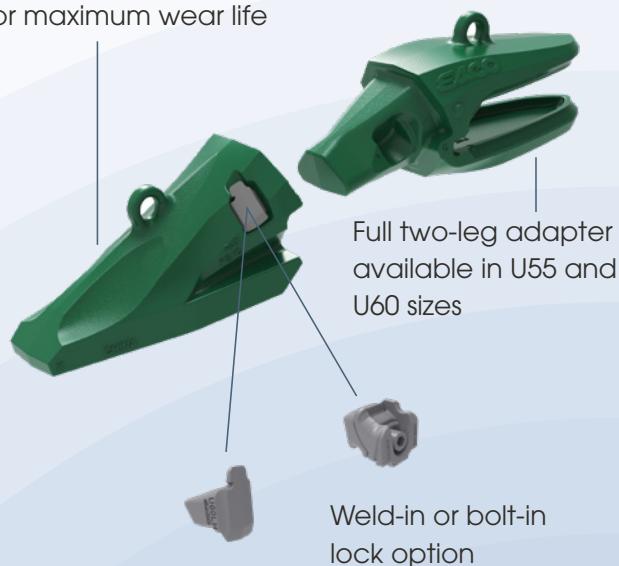
## Ultralok tooth system for hot slag applications

### Full offering available for 5.4 to 9.2 m³ (7 to 12 yd³) class wheel loaders

Handling hot slag is one of the most severe applications for tooth systems. ESCO's Ultralok tooth system has the specialized point profiles and lock options to provide excellent performance in hot slag. Ultralok hot slag points average 15% more useable wear metal than equivalent weight competitive systems.

The bolt-in lock offers simplified use and reliability; or select the weld-in option for maximum retention. The reliability of ESCO tooth systems and superior mechanical properties of our alloys make the Ultralok system the best choice. The result is increased productivity, reduced maintenance and less chance of unplanned downtime.

Heavy abrasion points for maximum wear life



Full two-leg adapter available in U55 and U60 sizes

Weld-in or bolt-in lock option



Mining technology for a sustainable future

*Caterpillar, Advansys, Hensley, Komatsu, MTG, Black Cat, and Deere are registered trademarks and/or trademarks of their respective companies and are not affiliated in any way with ESCO Group LLC.. Data contained in this document is for comparison purposes only and does not constitute a guarantee. Installation, operating conditions, wear and tear and maintenance are factors outside the control of ESCO and will affect product performance.*

**[www.esco.weir](http://www.esco.weir)**

**ESCO Group LLC – A Weir Group Division**

PO Box 10627  
Portland, OR 97296  
USA

P3003CON-ENG-L1120

Copyright © 2020, ESCO Group LLC. All rights reserved.