

ESCO® Sand and Clay Dredge Cutterheads

With GeoVor® Tooth System



ESCO

ESCO sand and clay dredge cutterheads featuring the GeoVor tooth system are designed to deliver maximum dredging performance. They have many features to ensure maximum productivity with minimum downtime, including ESCO's unique GeoVor system, the strongest, most trouble-free tooth system you can get.

ESCO sand and clay cutterheads are custom designed and manufactured to meet each specific requirement and offer the following advantages:

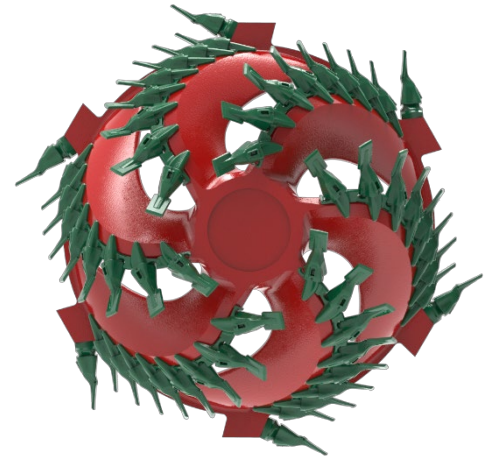
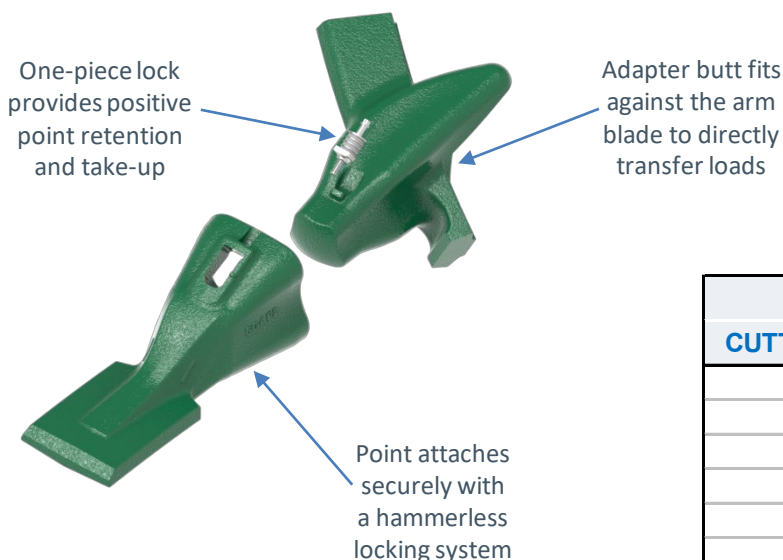
- Special arm-to-hub joints create full openings at the hub, providing minimum overlap between point tips and the adjacent arm
- Optional ring-mounted teeth to provide extra wear protection
- The arm openings are designed with maximum clearance, subject to customer requirements
- Above centerline points are available to dredge sand, clay or mixtures. Points have maximum wear metal with minimum throwaway metal

ESCO has the experience and skills needed to design solutions for the most demanding dredging applications.

For complete information about ESCO Dredge Cutterheads, contact your ESCO representative.

For detailed information about the full line of ESCO dredge replaceable parts, refer to the back page.

Unique ESCO GeoVor point and adapter system



ESCO engineers use advanced computer design systems to model sand and clay dredge cutterheads and analyze angles for maximum performance.



Sand & Clay Cutter Power Range		
CUTTERHEAD SIZE	kW	HP
2G	375-1325	500-1800
3G	1325-2200	1800-3000
4G	2250-3730	3000-5000
5G	3730-4415	5000-6000
6G	4415-6000	6000-8000
7G	6000-12000+	8000-16000+

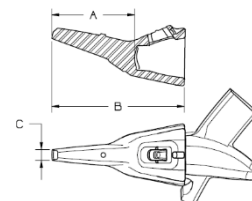
ESCO® Sand and Clay Dredge Cutterheads with GeoVor® System

Specifications for the GeoVor® System for Sand and Clay Cutterheads																
	PMID	TYPE	A		B		C		D		E		F*		WEIGHT	
			mm	in	mm	in	mm	in	mm	in	mm	in	mm	in	kg	lb
2G SERIES	Points															
	2GAP2	Pick	165	6.49	271	10.66	23	0.90							6	13
	2GAF2	Flare														
	2GAC2	Chisel														
	Adapters															
	8817-2G	Wing, RH							126	4.96	320	12.60			15	34
	WN2G	Weld-on							126	4.96	191	7.51	298	11.73	10	22
Pin																
234GL															0.1	0.2
3G SERIES	Points															
	3GAP2	Pick	203	7.99	338	13.22	24	0.96							9	20
	3GAF2	Flare	227	8.92	359	14.15	139	5.47							12	26
	3GAC2	Chisel	221	8.70	354	13.92	69	2.72							10	22
	Adapters															
	8816-3G	Wing, RH							152	5.98	342	13.48			22	48
	8812-3G	Wing, LH							152	5.98	340	13.38			22	48
	WN3G	Weld-on							152	5.98	217	8.53	346	13.97	14	30
	Pin															
234GL															0.1	0.2
4G SERIES	Points															
	4GAP2	Pick	194	7.65	335	13.17	27	1.08							11	25
	4GAF2	Flare	260	10.25	404	15.91	139	5.47							15	34
	4GAC2	Chisel	255	10.03	398	15.68	70	2.76							14	30
	Adapters															
	8820-4G	Wing, RH							175	6.89	392	15.43			34	75
	8818-4G	Wing, LH							175	6.89	392	15.43			34	75
	WN4G	Weld-on							175	6.89	239	9.39	369	14.54	20	44
Pin																
234GL															0.1	0.2
5G SERIES	Points															
	5GAP2	Pick	265	10.42	421	16.58	34	1.32							20	44
	5GAF2	Flare	302	11.88	458	18.03	165	6.50							24	52
	5GAC2	Chisel					70	2.76								
	Adapters															
	8868-5G	Wing, RH							190	7.47	402	15.83			40	87
	8869-5G	Wing, LH							190	7.47	439	17.27			38	83
WN5G	Weld-on							190	7.47	263	10.35	455	17.89	27	60	
Pin																
5678GL															0.2	0.5
6G SERIES	Points															
	6GAP2	Pick	274	10.79	438	17.26	34	1.35							25	55
	6GAF2	Flare	318	12.52	485	19.09	165	6.50							30	66
	6GAC2	Chisel	310	12.19	477	18.76	70	2.76							26	58
	Adapters															
	8868-6G	Wing, RH							211	8.31	412	16.22			49	107
	8869-6G	Wing, LH							211	8.31	412	16.22			49	107
	8884-6G	Wing, RH							211	8.31	572	22.51			59	130
	8885-6G	Wing, LH							211	8.31	427	16.81			42	93
WN6G	Weld-on							211	8.31	294	11.56	485	19.10	39	87	
Pin																
5678GL															0.2	0.5
7G SERIES	Points															
	7GAF3	Flare	360	14.18	534	21.04	181	7.14							40	87
	Adapters															
	8882-7G	Wing							213	8.37	460	18.11			56	124
	WN7G	Weld-on							213	8.37	295	11.63	573	22.55	42	92
Pin																
5678GL -R															0.2	0.5

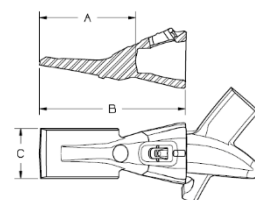
*Dimension F is comprised of AP2 type Pick Points and Nose Length D

Note: Items without dimensions can be developed to facilitate customer projects.

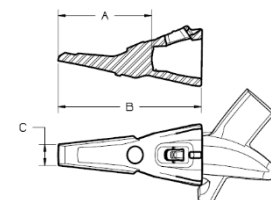
GeoVor pick point



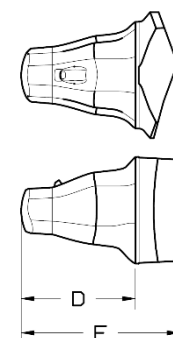
GeoVor flare point



GeoVor chisel point



GeoVor weld-on noses



GeoVor wing adapters



Weir ESCO

www.esco.weir